

COAST

ORANGE COUNTY

BLOW YOUR HORN ■ RENOVATE ■ EMBRACE CHANGE ■ RESOLVE



JANUARY 2011



62

at home

62 ■ The Look

White is right for winter. BY LISA LIDDANE

64 ■ What's In Store

Studio Chameleon evolves beyond its model home-inspired origins. BY LISA LIDDANE

65 ■ At Home With...

Larry Webb, co-founder of The New Home Company BY LISA LIDDANE

66 ■ Home Tour

Emily LaMarque designs the interiors of a contemporary home in a Cannery Village high-rise. BY LISA LIDDANE

76 ■ Open House

A farmhouse with a view on Lido Isle
BY TERENCE LOOSE

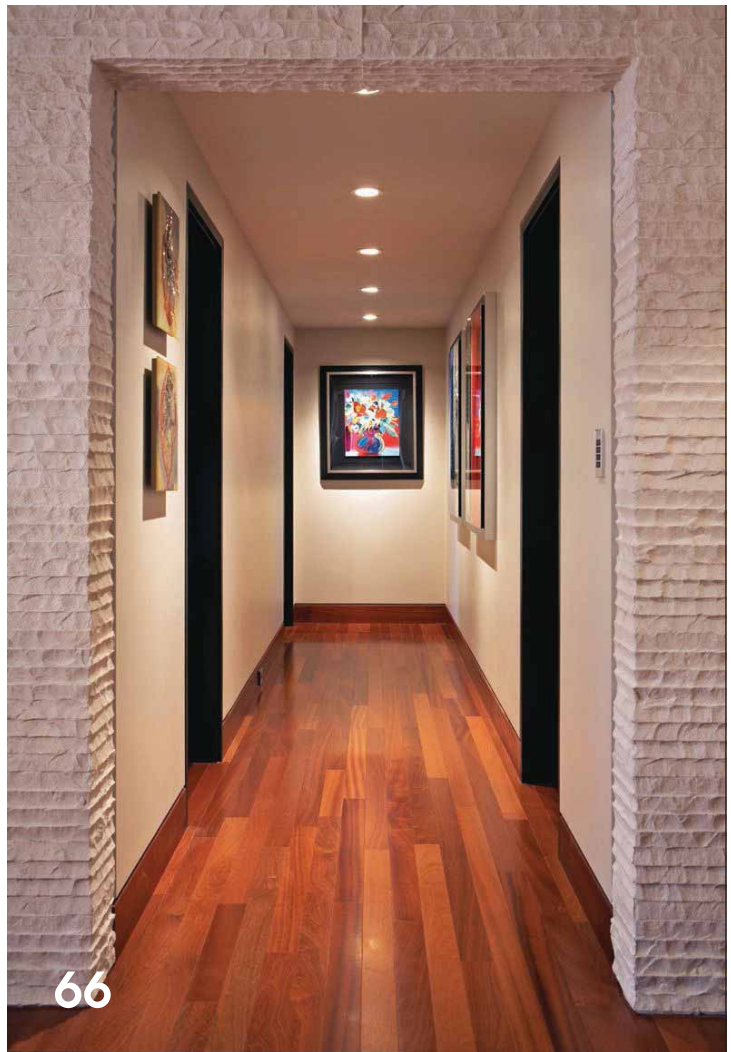
culture

114 ■ Art Access

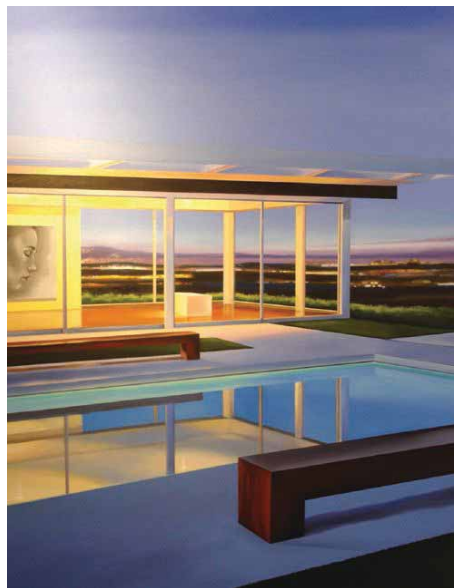
John Paul Jones at Laguna Art Museum and Gerard Basil Stripling at JoAnne Artman Gallery BY ROBERTA CARASSO

115 ■ On The Stage

Hair at the Orange County Performing Arts Center and *A Midsummer Night's Dream* at South Coast Repertory BY KRIS ALLEN



66



This month's cover is an oil on canvas by Santa Ana artist James Shilaimon entitled *Hanna's Vision*. Shilaimon's work, including a new series of paintings called Simple Pleasures that "revel in the basic pleasure that nature delivers to us," can be seen at the William Merrill Gallery, 611 S. Coast Hwy. in Laguna Beach, williammerrillgallery.com, 949.464.0067.

AT HOME



Threshold

Chiseled limestone walls frame the hallway of a home in a Cannery Village high-rise. For more on the residence, go to page 66.

BY LISA LIDDANE PHOTOS BY DOUGLAS HILL



Designer Emily LaMarque kept the living room neutral but accented it with flashes of bright hues.



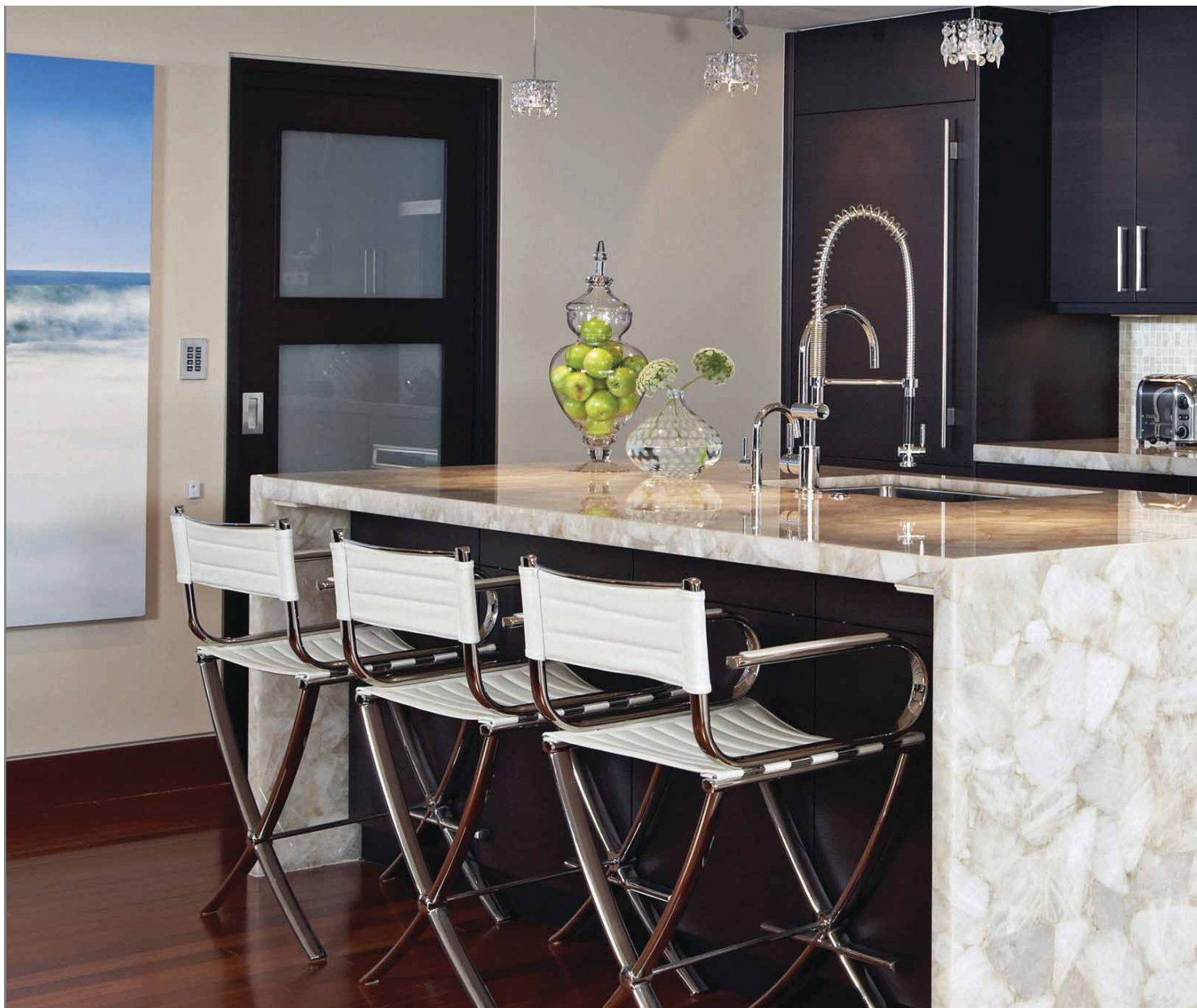
A CANNERY VILLAGE RESIDENCE GETS A SOPHISTICATED MAKEOVER FOR ITS NEW OWNERS

When a Newport Beach couple took a significant step in life, they enlisted the help of Los Angeles-based designer Emily LaMarque to make that change an adventure in design. Although the empty-nesters had enjoyed their oceanfront home in Collins Island for many years, their children were grown up, and there was so much more the couple wanted to do with their time than devote it to the upkeep of a high-maintenance house.

So they moved several miles away to a 2,258 square-foot, two-bedroom, two-and-a-half bath condominium in a Cannery Village high-rise.

"Most of the space had great views throughout, but it was very dated and felt much more closed off," says LaMarque. "The living room was sunken, the entire floor throughout was covered in shiny white tile and the master bath didn't even have a shower."

A DIFFERENT VIEW



At the top of her clients' design desires: maximize the views throughout the home without compromising the square footage; design a space that felt luxurious and well-appointed but still accommodated an informal, laid-back lifestyle; and set the space apart from high-rise monotony with one-of-a-kind custom architectural details that showcased flawless craftsmanship and dramatic materials and furnishings.

To start, LaMarque stripped the interiors of the existing condominium to get a fresh blank canvas. Then, she worked on improving the flow and definition of the rooms.

"The kitchen was opened up to create a great room that includes the kitchen, living and dining rooms as well as the entry and bar areas, so that the view is visible from anywhere in these rooms," she says. "The guest and master bedrooms had fantastic views, but we reconfigured the bathrooms to create larger, more luxurious spaces as well as ample closets for storage. Additionally, we placed pocket doors everywhere possible to keep the floor plan

open and flowing. Now, when the pocket doors are left open, you can catch glimpses of the stunning view from almost every room of the house. And when the sleek German-engineered wenge doors are closed, their opaque glass allows in plenty of light."

Arguably, no other task was more critical than framing the vistas unobtrusively. "Visually, the homeowners were adamant that none of the window treatments block the view when they were completely open since the clients didn't plan on operating them during the day," she says. "Despite room and height limitations, we designed an indiscernible valance in the living and dining room that completely hides the shades, and in the bedrooms, the elegant draperies are stacked and fold perfectly so that they don't come an inch past the windows."

To set the tone and create continuity in the entire residence, LaMarque chose a quiet combination of whites and chocolates. "Because the clients are drawn to lively, bright colors and passionate pieces, we created a fairly



VISUALLY, THE HOMEOWNERS WERE ADAMANT THAT NONE OF THE WINDOW TREATMENTS BLOCK THE VIEW.

LEFT: A quartz waterfall island is the focal point of the kitchen. BELOW: The modern crystal chandelier over the dining table is one of the jewels of the home.



VIEW MORE

■ **CHECK IT OUT** :: More photos of this Cannery Village home and more of Emily LaMarque's work can be viewed at the Emily LaMarque Design Studio site. :: emilylamarque.com

neutral palette for the furnishings that would allow the artwork to be emphasized rather than to upstage or compete with it." Then, LaMarque infused the spaces with clean lines and materials and furnishings that were both tailored and beautiful but had casual elegance, especially the furniture and cabinetry in living and dining rooms and the kitchen.

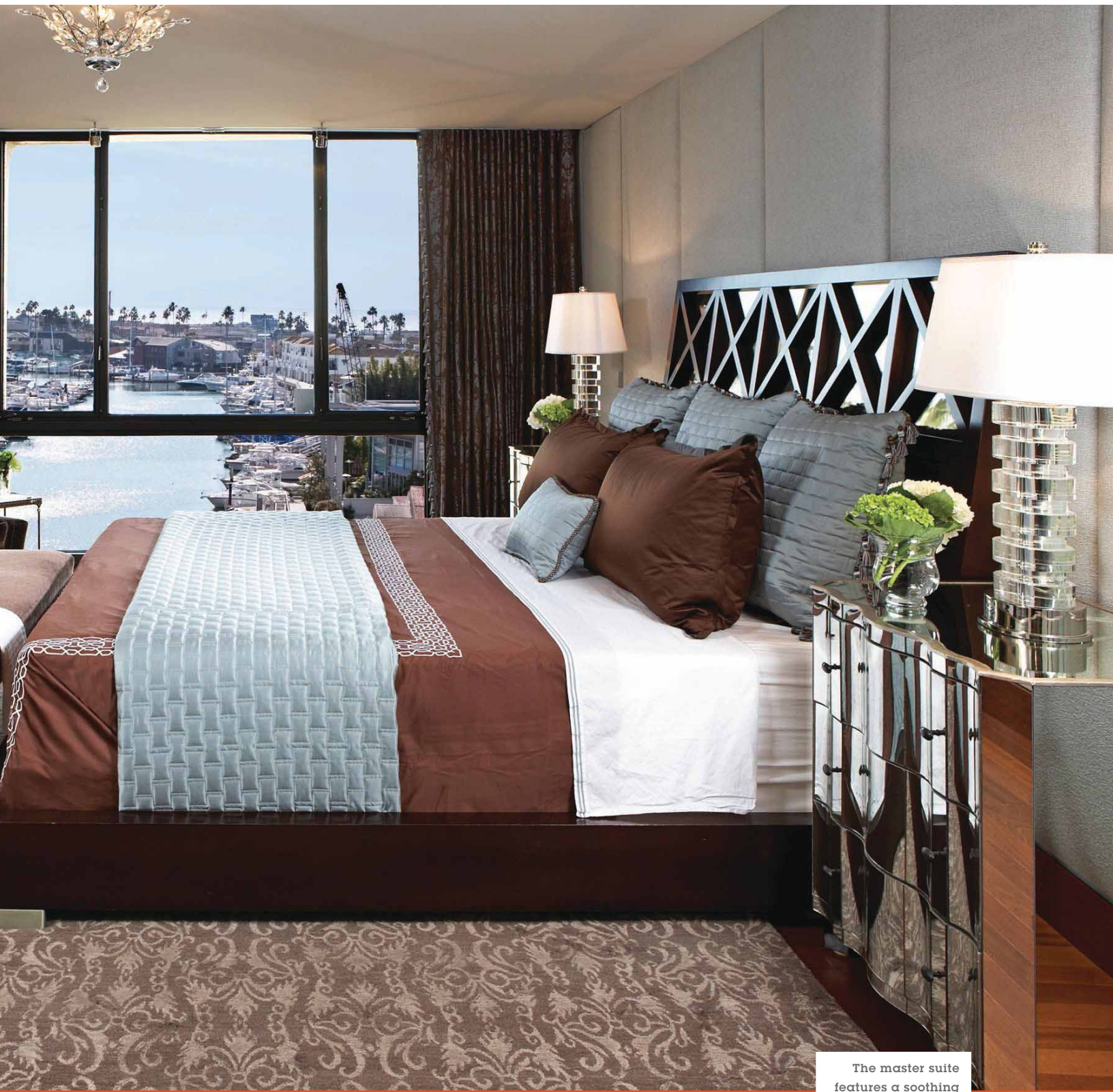
One of LaMarque's talents is her ability to play surfaces off each other. For example, she contrasted the smoothness of the quartz waterfall island and exotic sapele wood floors with textured and chiseled limestone walls in the bar and living room.

To finish, she added elements that shone or shimmered. Over the dining table, she hung a Lolli e Memmoli crystal chandelier that looked like a collection of beautiful dripping icicles, much like a dramatic diamond necklace above a simple couture sheath. She covered the walls with rectangular colored glass tiles in icy blues or mellow browns.

"To me, a space falls flat without a bit of sparkle," she says. "Reflectivity makes a space dynamic and moves your eye throughout the room. That said, a little shine goes a long way. In this home, the glass, crystal, chrome, and mirror were carefully selected to bounce the daylight and reflect the view from the large windows in every room. The darker, earthy, more masculine colors ground the space by muting and absorbing a fair amount of the reflection, while the crystal fixtures add a touch of feminine glamour to the space." It's all these custom details that remain LaMarque's favorites from this project.

As for the clients, the home could not be a more fitting beginning of a new chapter. Each time they go home, open the door, then look out to the ocean, what they have is a metaphor for this stage in their lives. It's still the same wonderful existence, but now, they're experiencing it with entirely new views.





GLASS, CRYSTAL, CHROME, AND MIRROR WERE CAREFULLY SELECTED TO BOUNCE THE DAYLIGHT AND REFLECT THE VIEW.

The master suite features a soothing and restful palette borrowed from the earth and sky.